



## Case Study

### **LED Message Display Board Solution**

**For**

### **Safety Statistics**

## Overview:

Larsen & Toubro is a major technology, engineering, construction, manufacturing and financial services conglomerate, with global operations. L&T addresses critical needs in key sectors - Hydrocarbon, Infrastructure, Power, Process Industries and Defense - for customers in over 30 countries around the world.

L&T is engaged in core, high impact sectors of the economy and our integrated capabilities span the entire spectrum of 'design to deliver'. With over 7 decades of a strong, customer focused approach and a continuous quest for world-class quality, we have unmatched expertise across Technology, Engineering, Construction, Infrastructure Projects and Manufacturing, and maintain a leadership in all our major lines of business.



Every aspect of L&T's businesses is characterised by professionalism and high standards of corporate governance. Sustainability is embedded into our long-term strategy for growth.

The Company's manufacturing footprint extends across eight countries in addition to India. L&T has several international offices and a supply chain that extends around the globe.

## Challenges:

**L&T** wanted to translate the real time safety parameters into visual indication. This real time visual indication of safety parameters will help enhance the moral and importance of safety.

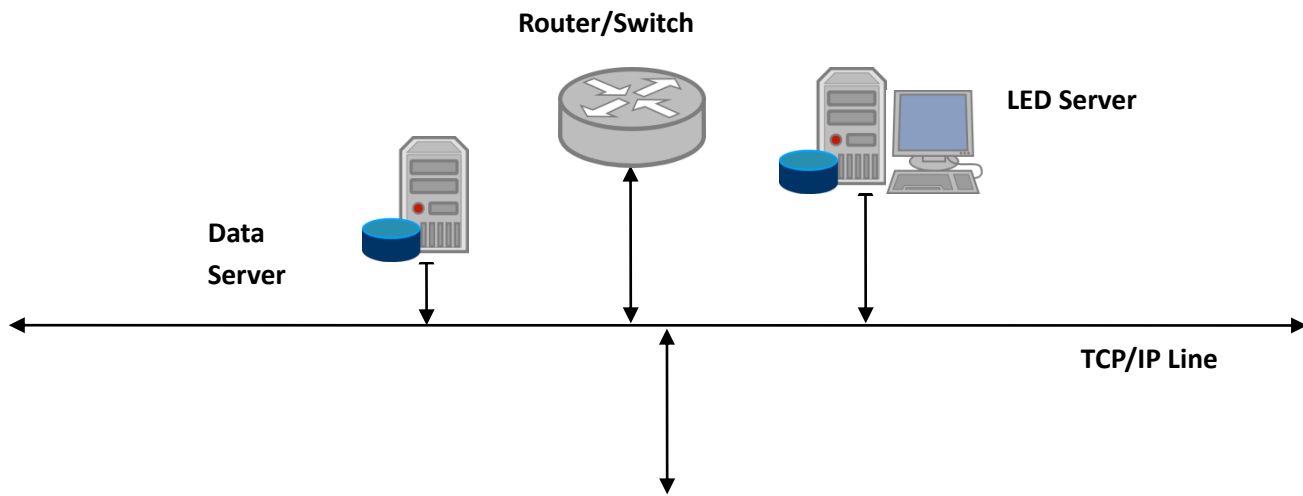
## **Solution:**

**Compucare** with its expertise was able to rise up to the challenge of **L&T** by providing customized LED Message Display Board. The custom size enables **L&T** to populate as much data as possible on a single screen. The LED Message Display Board are single sided with bright RED LED display, the display boards are clearly visible from an optimum distance of 10 meters and is designed to suit their factory condition.

### **How LED Message Board Solution for Safety Statistics is achieved?**

- The data is populated in the data server.
- The populated data is exported of .xls format.
- The LED Software Server imports and reads the data from the .xls format.
- The read data is displayed in the Large LED Message Display Board.
- The content in the LED Message Display Board is refreshed automatically in regular intervals.

**Technical Layout:**



**L&T Construction**  
*Buildings & Factories*

LODHA'S NEW CUFFE PARADE PROJECT, WADALA, MUMBAI - 37

### SAFETY STATISTICS BOARD

DATE	<b>29.09.14</b>	TIME	<b>14.42</b>
TARGET	ZERO ACCIDENT		
START DATE	<b>0 10 120 14</b>		
EXPECTED FINISH DATE	<b>03032023</b>		
SAFE MAN HOURS TILL PREVIOUS DAY	<b>200000</b>		
GRAND TOTAL OF SAFE MANHOURS WORKED DURING THE MONTH	<b>503000</b>		
GRAND TOTAL OF SAFE MANHOURS WORKED SINCE INCEPTION	<b>210000000</b>		
REPORTABLE ACCIDENTS TILL DATE	<b>00</b>		

Safety - Measure of Success.....

**LED Message Display Board**

## **Conclusion:**

Thus providing the custom LED Message Display Board and automating the visual indication process of real time safety parameter. This real time visual indication of safety parameters will help enhance the moral and importance of safety.